



the brain injury association

July 2013

Hull + East Riding Organisation

# Headway News

Hull + East Riding

improving life after brain injury



**twitter:**  
@headwayhero



**facebook:**  
/headwayhero



**web:**  
headwayhero.org.uk



**email:**  
headwayhull@talktalk.net



**call lesley:**  
01430 430720  
07538 319716



**call alison:**  
07799 000067



**national helpline:**  
0808 800 2244

## Inside this issue:

Brainy Dogs	2
Headway Awards	2
Skydive	3
PIP Consultation	3
Fancy a coffee?	3
OT Research	4
Recycling Unlimited	4
Diary	4

## Critical shortfall in local NHS services

As some of you will know, Dr Jayawardhana began his well-earned retirement in May this year. Dr Jay, as he was known, was a Consultant in Rehabilitation Medicine and helped scores of injured people, including those with brain injuries. Many people will owe him a debt of gratitude for his dedication and expertise which helped them through difficult times. We'd like to extend our own thanks for his years of hard work, and wish him well on his retirement. He will be missed.

Sadly, a permanent replacement has not been found yet for Dr Jay, though we understand from Phil Morley, Chief Exec of Hull & East Yorkshire Hospitals NHS Trust, that a locum (temporary) medic has been appointed and is due to start soon. In the mean time, a neurology consultant will be running

the rehab ward at Castle Hill, with input from the therapy teams. The Trust will continue to look for a permanent candidate.

We are also worried to learn that the neuropsychology service has been suspended while Dr Selen Selvachandran is on maternity leave.

We have been corresponding with Phil Morley to make sure the Trust is aware of our concerns about the lack of specialist neuro rehabilitation and neuropsychology services across the region. We have been assured that the Trust is actively recruiting a permanent replacement for Dr Jay, and is also concerned about the lack of neuropsychology services.

With Headway UK's help, we are now liaising with the local Clinical Commissioning Group, which is the new body run by GPs responsible for ser-

vice provision in the area. We will keep you updated with our progress.

Some of our members are already feeling the effects of this, with appointments being cancelled. If you are worried, please make sure that you liaise with PALS (01482 623065). You can also contact us—remember that our national helpline is run by nurses and they can offer you great advice.

### Key points:

- There has been no specialist Rehab Consultant since May.
- Neuropsychology services have been suspended
- We are liaising with the Trust and the CCG
- If you need help with cancelled appointments/ access to services, contact PALS
- Headway UK's national helpline is nurse-led and can also help.

## Vote for Headway's Brainy Dogs

Headway Ipswich & East Suffolk's innovative Brainy Dogs project has been shortlisted for a national award - and you have a chance to help it win!

Headway UK has asked its supporters across the UK - and indeed worldwide! - to vote for the project to win the title of Best Health Project in The National Lottery Awards.

Brainy Dogs is a unique scheme that works with dogs and prisoners to improve the mental wellbeing of people with brain injuries. Neurological conditions can leave people with poor communication skills

and feeling isolated having lost contact with friends and family following personality changes. A 'Brainy Dog' increases their confidence, gives them a reason to take regular exercise and makes them feel much better about life.

Brainy Dogs is run by Headway Ipswich and East Suffolk with the help of £60,000 of National Lottery funding. The spin-offs from the project are far reaching: Prisoners from Hollesley Bay

Open Prison get involved in training the dogs and dogs from Felixstowe Blue Cross rehoming centre get new homes and owners.

You can easily vote online here:

[www.lotterygoodcauses.org.uk/awards/health](http://www.lotterygoodcauses.org.uk/awards/health)



“ What are your views on the ‘Moving Around’ activity within the current PIP assessment criteria?”

## PIP ‘Moving Around’ Assessment

### Q. What are your views on the Moving Around activity within the current PIP assessment criteria?

We've been contacted by Kath Goodman, Partner Support Manager at the Department of Work and Pensions in Hull. They have asked us to take part in a consultation which closes on 3 August.

The current criteria mean that anyone who cannot stand and then walk 50 metres safely, to an acceptable standard, repeatedly and in a reasonable time period

automatically receives at least the standard rate of the Mobility component of PIP. People who cannot stand and then walk more than 20 metres safely, to an acceptable standard, repeatedly and in a reasonable time period receive the enhanced rate.

The DWP says that benchmark of 20 metres was intended to allow them to distinguish between those who are effectively unable to get around due to reduced physical mobility – for example, people who are

only able to move between rooms in their house but go no further.

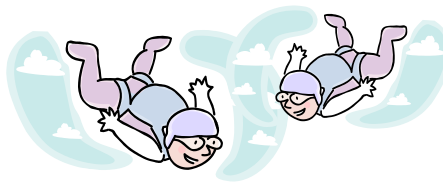
You can find out more here: <https://www.gov.uk/government/consultations/consultation-on-the-pip-assessment-moving-around-activity>

We would like to coordinate our response from Headway HERO and would like to hear your thoughts. Please get in touch with Lesley as soon as you can.

## Headway HERO Skydive

We were very pleased to be contacted by Occupational Therapists Tazleen Karmali and Emma Cooke who would like to raise money for us by doing a skydive later this summer.

We'll keep you updated on the plans and let you know how you can sponsor them too, so keep checking out the newsletter. Chocks Away, Ladies!!



## Headway National Awards

It's that time of year again when Headway supporters acknowledge inspirational acts by nominating people for the charity's annual awards. This year's ceremony will take place on Friday 6 December in Mayfair, London. Finalists, as selected by a panel of judges, will receive two complimentary tickets to join us for this glittering occasion. Headway will even take care of the travel arrangements.

The Headway Annual Awards provides an opportunity to bring together hundreds of people af-

ected by brain injury from Headway Groups and Branches across the UK, to celebrate incredible achievements and say a public thank you to some very special people. So, if someone at your Group or Branch who has achieved something special, or you know a carer, volunteer or campaigner whose work has for too long gone without the acknowledgement it deserves, why not nominate them for a national award?

Anyone associated with Headway's work is invited to make a nomination

online: <https://www.headway.org.uk/nominate.aspx> or you can download a nomination form. There are five categories of award:

- Achiever of the Year
- Campaigner of the Year
- Carer of the Year
- Stephen McAleese Outstanding Achievement Award
- Volunteer of the Year

The deadline for entries is **Friday 2 August.**



## JOIN US FOR A COFFEE

We're having an informal get-together at **COSTA**, Kingston Retail Park, Hull (opposite Toys R Us). Whether you fancy a chat over coffee or just want a change of scenery, come along! We'll have a reserved seating area.

**FRIDAY 5 JULY: 2PM**



the brain injury association  
hull and east riding

## Headway HERO Diary

### Friday 5 July 2013

Informal get-together for coffee at COSTA, Kingston Retail Park, Hull, HU1 2TX (Opposite Toys R Us) (meet at 2pm)

### Friday 12 to Sunday 14 July 2013

Way Ahead conference, East Midlands Conference Centre, Nottingham.

### Wednesday 17 July 2013

Monthly meeting, Victoria Dock Village Hall. 7:00pm start (6:30pm for members committee)

## OT Research help

Joanne Johnson, an occupational therapy student, attended our June meeting. She would like our help with her research.

Are you a parent providing care to a young adult (18-30) following a traumatic brain injury?

Have you been in this role for at least 6 months?

If so, Joanne would like to hear from you to explore your experiences. You can contact her for more information on 07988 666102 or email [a3004461@my.scu.ac.uk](mailto:a3004461@my.scu.ac.uk)

### About us

Headway HERO is your local branch of Headway, a national charity that provides information and support for brain injured people, their families and carers.

Headway—the brain injury association is a Registered Charity No 1025852 and a company limited by guarantee. Registered in England No. 2346893.

### improving life after brain injury

## Work Rehab: Recycling Unlimited

The wonderful folks at Recycling Unlimited have talked at our monthly meetings before and continue to work with our members. However, it's always good to highlight the work that they do for new members.

The Recycling Unlimited Group is a registered charity offering advice and support for those living with, or recovering from, Mental Health problems, as well as people who are marginalised because of disability or other factors.

By providing a supportive work based environment for experience and training, they develop employability, self-confidence, basic language and interpersonal skills.

They are funded through the sale of the goods they produce and furniture plus other items generously donated to them in their shops. They also deliver workplace training for people and supplement this through cash donations and grants.

There are lots of opportunities for members to get involved with Recycling Unlimited, for example working in the charity shops, driving, perhaps making wooden garden furniture which is sold on to the public at fantastic prices to raise more money for the charity... You can give as much or as little time as you are able, and are free to build this up as you wish.

Why not contact them to

find out more?

[Bric A Brac/Books/Clothes Shop](#): 151 Newland Avenue 01482 343726

[The Furniture Shop](#): 161 Newland Avenue 01482 493170

[The Yard](#): 204 Newland Avenue 01482 444430

[Bontoft Avenue Joinery Shop](#): 01482 440235

[Email](#): [recycling.unlimited@yahoo.co.uk](mailto:recycling.unlimited@yahoo.co.uk)

